

Admission is carried out by citizens of the CIS  
Interview conducted by National Technical University  
Commission on conditions provided for foreign nationals.

The terms of admission to the National Technical  
University can [www.bntu.by](http://www.bntu.by) available online in the "Faculty  
international cooperation. "More information on admission  
can be specified by email [icd@bntu.by](mailto:icd@bntu.by).

Tuition by function (payment in U.S. dollars),  
medical insurance, registration and accommodation in hostels  
University (per academic year):

Faculties, the level of education	Full-time training	
	For physical person	For juridical person
Preparatory courses (preparatory department)	1500	1300
Students	2500	2250
Students of the Faculty Management and Marketing entrepreneurship and Faculty of Architecture	2800	2500
Undergraduates (except economic specialties)	2500	
Postgraduates	2800/2000*	
Doctoral	3500	
Registration RB 50	50	
Accommodation in a dormitory	300	
Medical insurance	85 euro	

\* - correspondence departments.

Information about the procedure for admission on  
the website National Technical University  
Admissions Committee -  
<http://priem.bntu.by>

## ФАКУЛЬТЕТ ТРАНСПОРТНЫХ КОММУНИКАЦИЙ



### Our address is:

Republic of Belarus, 220114 Minsk,  
Independence Avenue, 150, Education Building 15  
Tel.: (017) 267-98-84  
URL: [www.bntu.by](http://www.bntu.by) / ftk  
E-mail: [ftk@bntu.by](mailto:ftk@bntu.by)

## BELARUSSIAN NATIONAL TECHNICAL UNIVERSITY

## БЕЛОРУССКИЙ НАЦИОНАЛЬНЫЙ ТЕХНИЧЕСКИЙ УНИВЕРСИТЕТ

## TRANSPORT COMMUNICATIONS FACULTY

## ФАКУЛЬТЕТ ТРАНСПОРТНЫХ КОММУНИКАЦИЙ



Decision of the Board members of government  
Commonwealth of Independent States of 25 November  
2005 Belarusian National Technological University (National  
Technical University) was given the status the basic

organization of the CIS member states on higher technical education.



In the National Technical University at the Faculty of Transport Communications are training students and graduate students in the following specialties:

- Roads;
- Bridges and transport tunnels and subways;
- Conveying, construction, road machinery and equipment;
- Surveying;

Students pass as general theoretical training and practical skills development work in a production environment.



Studies and research conducted under the guidance of 9 doctors and 40 candidates of sciences, among which famous scientists:



Kovalev Yaroslav - Dr. Professor of "Construction and maintenance of roads";



Podshivalov Vladimir - PhD, Head of the Department "Geodesy";



Pastushkov Gennady -d.t.n., Head. Department "Bridges and tunnels "



Lyahevich Henry - Dr. Professor of "Bridges and tunnels ";



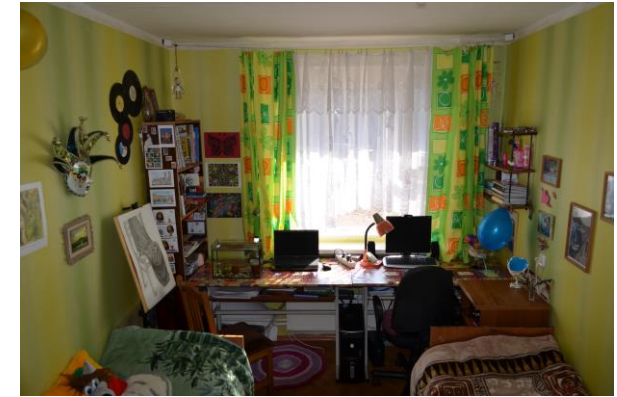
Vavilov Anton - Dr. Head of Department "Building and road cars ";



Verenko Vladimir - Ph.D., Professor of the Department "Designing roads."

Graduate students work in three research laboratories, corresponding profile.

For welfare and recreation of students created conditions in dormitories, libraries, sports complexes and



sanatorium

**IN THE FUTURE WITH US!**

